

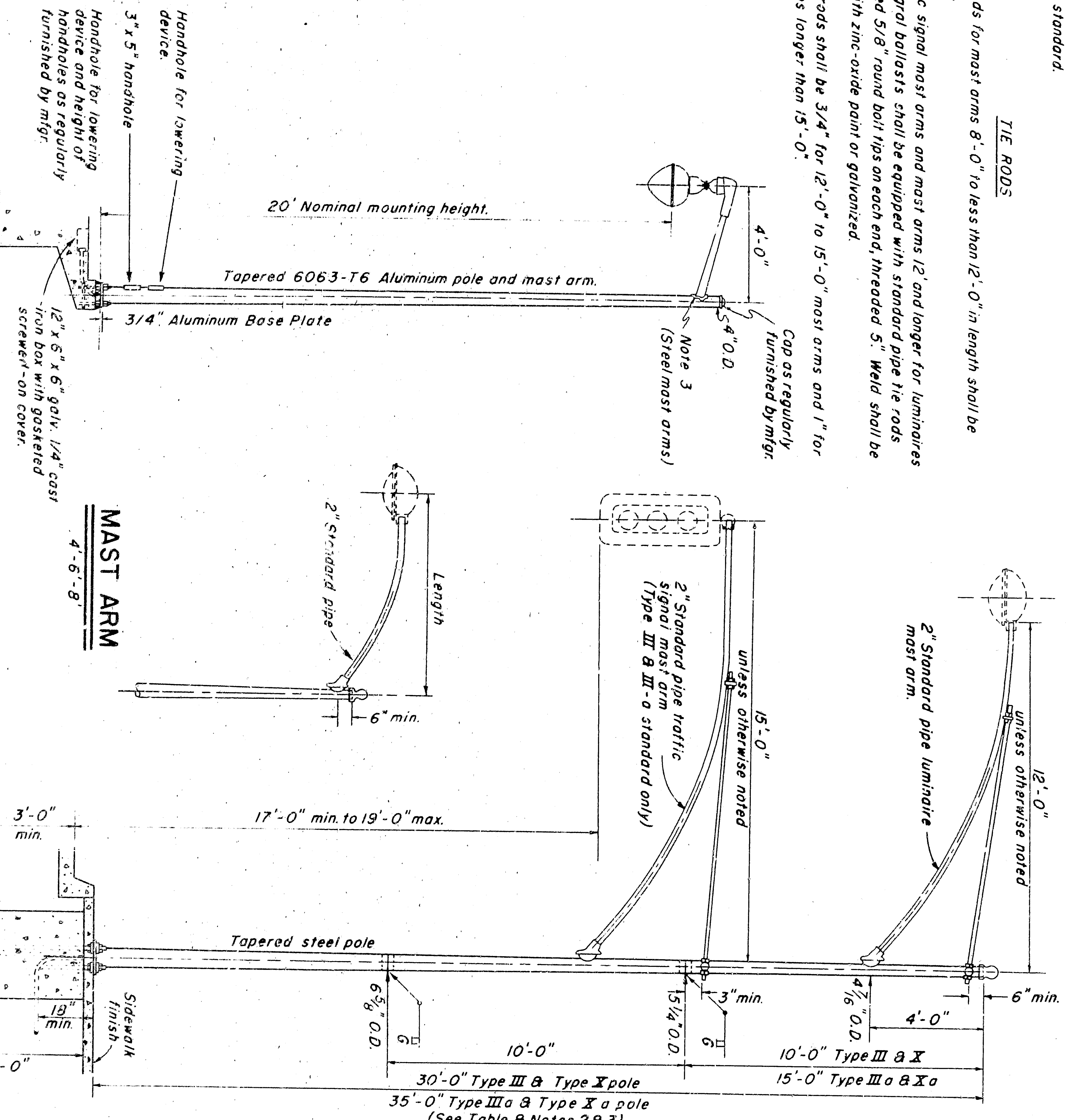
POLE TYPE	POLE HEIGHT & GAUGE	POLE BASE DIAMETER	BASE PLATE DIMENSIONS	BASE PLATE SLOT SIZE	ANCHOR BOLTS DIMENSIONS	BOLT CIRCLES DIAMETER
II	20' x 10ga *	6 3/8"	11 1/2" x 9 1/2" x 11 1/2"	1 1/2"	1" x 3/8"	9 1/2"
II-a	25' x 10ga *	7 1/2"	11 1/2" x 9 1/2" x 11 1/2"	1 1/2"	1" x 3/8"	10"
III	30' x 7ga *	8 1/2"	13 1/2" x 11 1/2" x 13 1/2"	1 1/2"	1 1/4" x 3/8"	11"
III-a	35' x 7ga *	9 1/2"	13 1/2" x 11 1/2" x 13 1/2"	1 1/2"	1 1/4" x 3/8"	11 1/2"
X	30' x 10ga *	8 1/2"	11 1/2" x 9 1/2" x 11 1/2"	1 1/2"	1" x 3/8"	11"
X-a	35' x 10ga *	9 1/2"	11 1/2" x 9 1/2" x 11 1/2"	1 1/2"	1" x 3/8"	11 1/2"
XIV	20' x 10ga thick	7"	9 1/2" x 11 1/2" x 9 1/2"	1 1/2"	1"	10"

BASE AND ANCHOR BOLT SCHEDULE

NOTE
 * If gage acceptable if fabricated from sheet steel of 40,000 p.s.i. minimum yield.
 ** Length indicated does not include required 4"-90° bend. See Standard Electrical Details - Bridge (ES-7) for structure mounted standard.

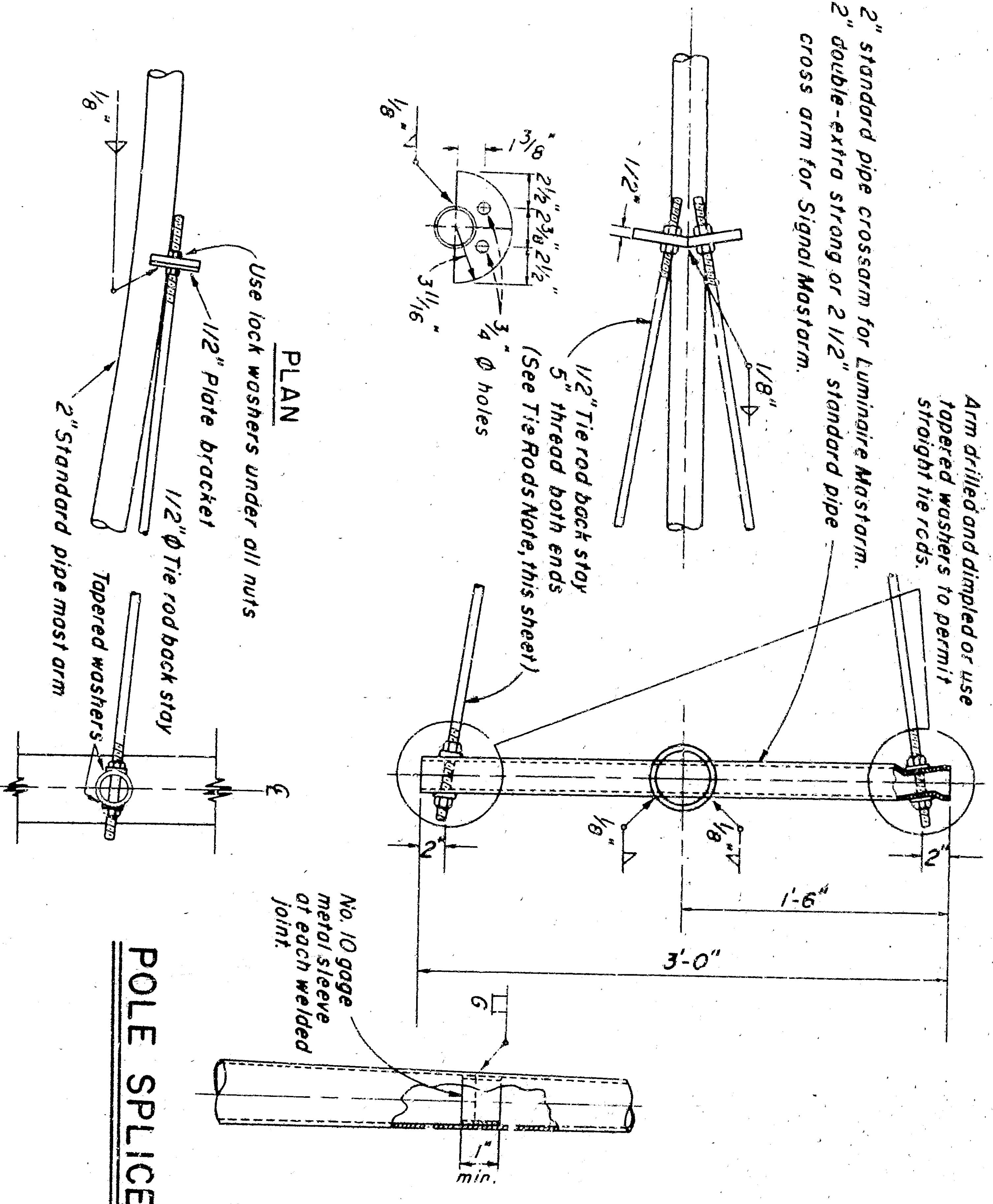
TIE RODS

1. All tie rods for mast arms 8'-0" to less than 12'-0" in length shall be as shown.
2. All traffic signal mast arms and mast arms 12' and longer for luminaires with integral ballasts shall be equipped with standard pipe tie rods with welded 5/8" round bolt tips on each end, threaded 5". Weld shall be coated with zinc-oxide paint or galvanized.
3. Pipe tie rods shall be 3/4" for 12'-0" to 15'-0" mast arms and 1" for mast arms longer than 15'-0".



MAST ARM TIE RODS AND CROSS ARM

(Use for mast arms in excess of 8' in length)



CALIF - TYPE STANDARDS

GENERAL AND INSTALLATION NOTES
 1. All steel shafts and mast arms shall be galvanized. Bolts, screws, nuts, washers and tie rods shall be galvanized.
 2. The lower 5' length of a 35' Type III - a pole shall consist of a 5'-4" gage tapered section (B.O.D. to 8 1/16" O.D.) butt welded to the lower end of a 30' Type III pole.
 3. The lower 5' length of a 35' Type X - a pole shall consist of a 5'-0" gage tapered section (B.O.D. to 8 1/16" O.D.) butt welded to the lower end of a 30' Type X pole.
 4. The lower 5' length of a 25' Type II - a pole shall consist of a 5'-0" gage tapered section (B.O.D. to 7-5/16" O.D.) butt welded to the lower end of a 20' Type II pole.
 5. For standards to be installed on structures, see Div. ES-7.

- STEEL MAST ARMS**
1. Luminaires shall be secured that when mast arm is removed, the luminaire end shall not be below top of pole or more than 15" above.
 2. The last 3' of the mast arm shall be straight and shall be horizontal with luminaire or traffic signal attached.
 3. Connection between mast arm and pole shall be made by means of a right-angle socket of a design permitting simple removal of the mast arm and providing a chesed outlet for electrical conductors.
- ANCHOR BOLTS**
1. Each standard shall be supplied with 4 anchor bolts.
 2. Each anchor bolt shall be provided with 6" of thread and an 4"-90° bend and shall be furnished with two nuts and two washers. Washers shall be 1/8" x 2 1/2" min.
 3. Threads may be cut or rolled. Bolts shall be galvanized or plated after threads are formed.
 4. One anchor bolt shall be bonded to conduit.

TYPE XIV
 (P.O.C. Electrical)
 SCALE 3/8" = 1'-0"

TYPE III & II-a OR TYPE X & X-a
 (TYPE III SHOWN)
 SCALE 3/8" = 1'-0"

TYPE II & II-a
 ELEVATION
 (TYPE II SHOWN)
 SCALE 3/8" = 1'-0"

STANDARD DETAILS NO. 6
 CALIFORNIA TYPE STANDARDS
 20ft., 25ft., 30ft., 35ft. Pole Heights
 SCALE AS NOTED
 REV. DATE: 11/63
 DRAWING E-

APPROVED: *Detemberg 1962*
 Assistant State Highway Engineer, C.E. Lic. No. 5989
 TO RECORDING PLANS DATE

STATE OF CALIFORNIA
 DEPARTMENT OF PUBLIC WORKS
 DIVISION OF HIGHWAYS

Dwg. No. 3325-Sheet 8 of 8 Sheets ES-6-4